

# Mistral C13 Slim AC Plug/ Mistral AC Cable Assembly Instructions

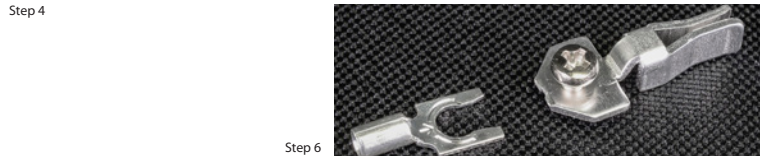
- EN** Instructions in English are available at the link below.  
**ES** Las instrucciones de instalación en el español se encuentran disponibles en el enlace que se indica a continuación.  
**FR** Les instructions d'installation en français sont disponibles au lien suivant.  
**DE** Eine Anleitung in englischer Sprache ist unter dem unten stehenden Link verfügbar.  
**NL** Instructies in het Nederlands zijn beschikbaar via onderstaande link.  
**ZH** 安裝說明請詳見下列網址連結。  
**JA** 日本語のインストールガイドは下記リンク先でご覧いただけます。  
**KO** 한국어로 작성된 설치 지침은 아래 링크에서 볼 수 있습니다.  
**RU** Инструкции по установке на русском языке можно найти по ссылке ниже.  
**IT** Le istruzioni per l'installazione in italiano sono disponibili nel link indicato in basso.  
**PT** Pode encontrar as instruções de instalação em português através do link em baixo.  
**PL** Instrukcja w języku polskim są dostępne w linku poniżej.  
**TH** คำแนะนำในการติดตั้งโปรดดูที่ลิ้งค์ด้านล่างนี้

<http://www.audioquest.com/ac-power>

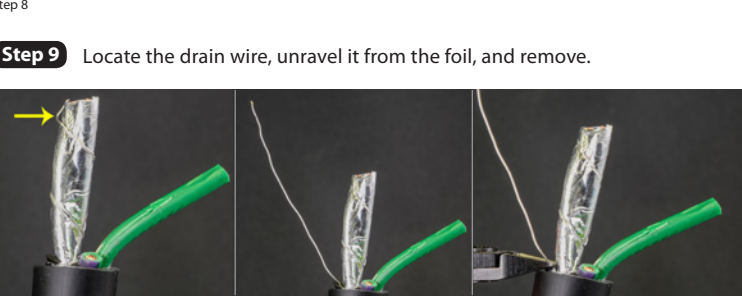
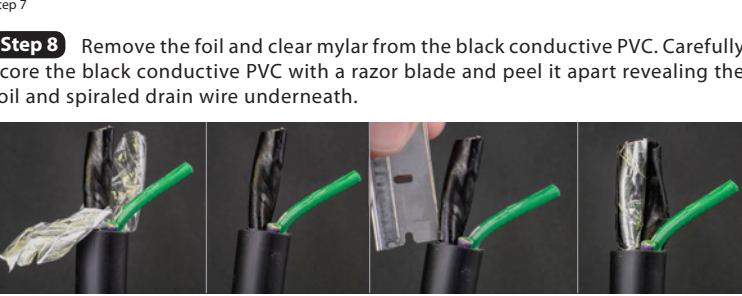
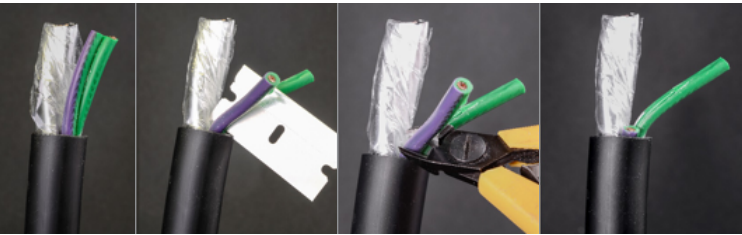
**Mistral Cable Must Be Used in the Correct Direction:** All drawn metal conductors have a non-symmetrical, and therefore directional, grain structure. AudioQuest controls the resulting small RF-impedance variation of each Mistral conductor so that noise is drained away from where it will cause distortion.

The correct orientation of Mistral AC cable is printed with arrows on the cable jacket. The arrows must point towards the wall plug.

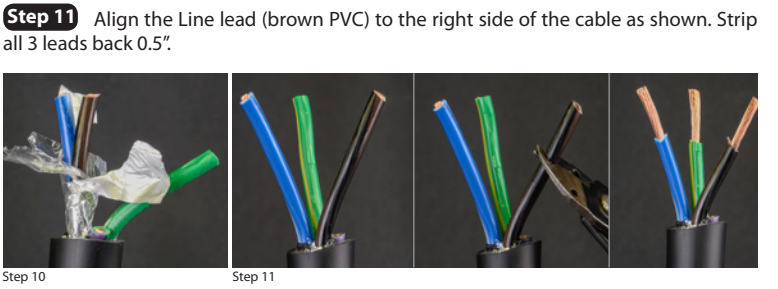
audioquest → MISTRAL → AC POWER CABLE



**Step 7** Strip the jacket back 1.25". Be very careful not to cut too deep. The 2 green wires are fused together. Separate them with a razor blade and then remove the wire with the purple stripe.



**Step 10** Remove the foil and mylar surrounding the Line and Neutral leads. Be very careful not to cut into the brown or blue PVC jackets.



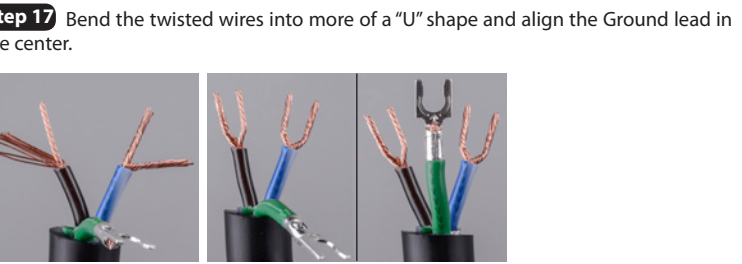
**Step 12** Flip the cable over so that the Line lead (Brown/Black) is on the left. Place the spade into a ratcheted crimping tool.



**Step 14** This is what the front and back of the crimped spade should look like.



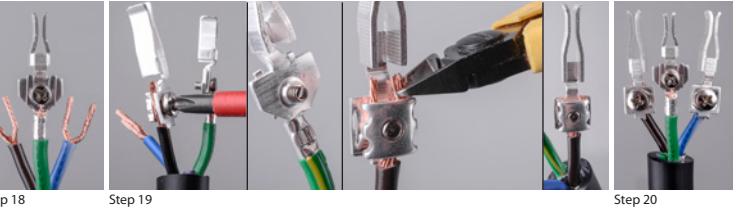
**Step 16** Separate the Line lead into two sections like the letter "V" and twist each of them tightly together. Do the same with the Neutral lead (blue/white).



**Step 18** Attach the crimped spade to the terminal for the Ground lead.

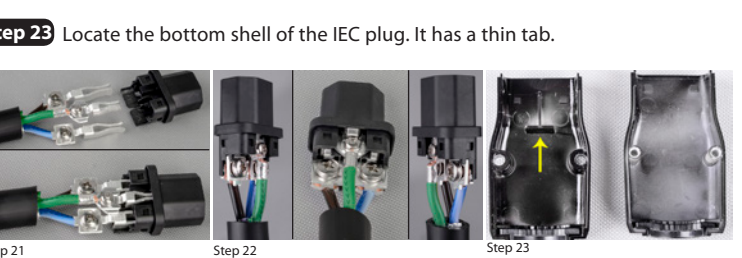
**Step 19** Attach the terminal for the Line lead. Remove any excess wire.

**Step 20** Do the same for the Neutral lead and this what all 3 should look like together.



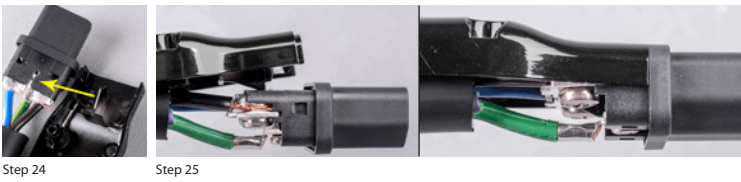
**Step 22** Make sure they are inserted as far as they can go.

**Step 23** Locate the bottom shell of the IEC plug. It has a thin tab.

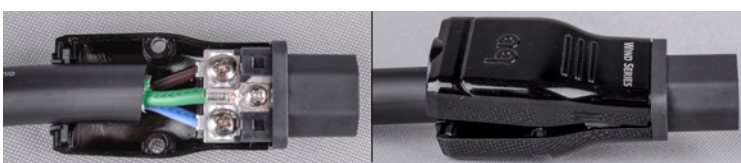


**Step 24** The tab on the shell fits into the slot on the plastic IEC plug.

**Step 25** Align the tab into the slot. Push down and forward so that the shell lines up with the IEC plug.



**Step 26** It should look very clean when properly in place. Put the top shell into place.



**Step 27** Attach the two screws holding the shells together.

**Step 28** This side of the cable is finished.



**This is the kit for the Mistral wall plug barrel.**



1. Barrel
2. Strain Relief
3. Strain Relief Screws (2)
4. Adapters for smaller cable (2)
5. Gasket for the back of the barrel
6. Snap Ring to hold the gasket to the barrel

**Step 1** Preparing the barrel: Screw the strain relief into place inside of the barrel with the 2 provided screws.

**Step 2** Place the gasket as shown inside the bottom of the barrel. Secure it into place with the snap ring.

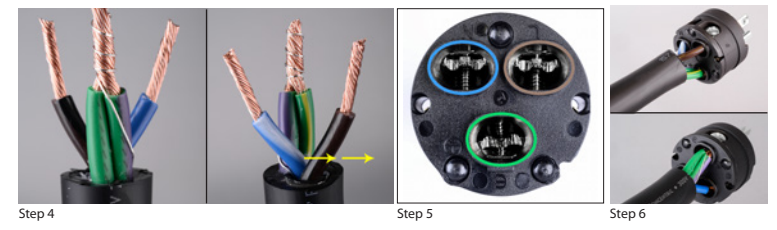
**Step 3** Gently push the barrel onto the cable. This is the wall plug side of the cable.



**Step 4** Strip the cable but do not cut the drain wire OR the green wire with the purple stripe. Strip each wire back 0.5" just like before.

**Step 5** Carefully twist the green wires together and wrap the drain wire around that. Move the brown/black wire from the left side to the right side again. Bottom and top views of this are shown above. This color coded diagram of the inside of a plug shows which lead is connected to its appropriate terminal. Notice that in the picture of the cable above that the brown/black wire is on the left side but its terminal on the plug is on the right.

L= Line, N= Neutral, E= Earth or Ground



**Step 6** Place the wires into the plug and fasten the screws to secure them into place. Top and bottom views are shown.

**Step 7** Slide the barrel onto the plug and secure the two hex screws that hold the barrel in place. Then tighten the strain relief screws near the bottom of the barrel until they are snug. This side of the cable is finished.

If you have any questions – please call AudioQuest in the US at (800) 747-2770 or +1 949-790-6000, or call AudioQuest in The Netherlands at +31 165 54 14 04, or email: [info@audioquest.com](mailto:info@audioquest.com)

audioquest